

technical hotline +44 (0)1268 563720

raised floor systems



range introduction

Cablelink Plus Modular Floorboxes have been specifically engineered to ensure robustness, a faster installation and maximum life span flexibility.

The unique "Ladder" design enables modules to be positioned at lower heights within the box to cater for Cat 6 patch leads, transformer plug tops and audio visual applications. The design allows the complete box and modules to be easily installed and removed.

feature benefits

- Tested to EN50085-2-2 to accept 5000N load
- Unique ladder design
- Quick release blades ensure a fast and simple installation
- Designed to support Cat 6 structured cabling systems
- Choice of two frame sizes provide 3 and 4 module solutions to suit all applications
- Self Closing lid in accordance with IEC 61534-22
- Wide range of power and data accessories available to meet all requirements
- Quality, reliability and safety come as standard
- Provision of RCD protection supports compliance with the 17th Edition Wiring Regulations
- 5 year guarantee

raised floor systems

customer services +44 (0)1745 532343

Cablelink Plus Modular Floorbox

OUTLET BOX COLOUR

- 'Grey' or 'Light Grey' option

ROBUST CORD CAPS

- Designed for improved retention

HANDLE

- Designed for improved accessibility

8MM RECESSED LID

- Simple carpet cut out
- Easily removable and reversible for improved accessibility
- Can be hinged from either of two sides
- Self Closing in accordance with IEC 61534-22

OPTIONAL LOCKABLE LID

- Added security when not in use

OPTIONAL CABLE RETAINER CLIPS

SQUARE BOX OPTION

- 90° rotation of floorbox for system flexibility

OPTIONAL LID TETHER

- Added security
- Eliminates lid losses

LADDER DESIGN

- Modules can be positioned at different heights
- Increased clearance for Cat 6 patch leads, transformer plugs and audio visual applications

ONE PIECE MOULDED FRAME

- Simple ordering of product
- Faster installation

MODULES

- Design enables modules to be installed/removed whilst box still in situ
- Left and right handed power plates provide plug top cable strain relief
- Pre-wired power modules available for quicker installation
- Cat 5e, 6, 6A and fibre solutions available

BLADES

- Quick release blades to secure firmly in position for a "fit and forget" installation
- No tools required for faster installation
- Self adjusting blades – ensures floorbox remains secure throughout service life
- Fixes to floor thicknesses of 15-50mm



technical hotline +44 (0)1268 563720

raised floor systems

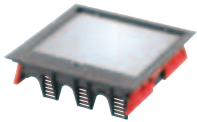
Cablelink Plus Modular Floorbox

The Modular Floorbox and Modules are ideal for use with the Interact Underfloor Power System – see page 9 for details.

Modular Floorbox selector guide

- Modular Floorboxes are ordered as a single assembly – “Frame and Lid”
- Floorbox – select number of compartments required, choice of trim colour and lockable lid
- Accessory Modules – select from wide range of serviced power and unserviced data options
- Optional Extras – e.g. lid tether and cable retainers available if required
- A selection of pre-configured modular floorboxes are available (see page 21 for details):
 - Switch socket outlets, data and blank modules
 - Optional pre-wired modules to tap-offs
 - Optional tap-off lengths – 3m or 5m

Floorbox



BOX SIZE	265 x 265mm	340 x 265mm
COMPARTMENT	3	4
84–124mm Depth	CRMB265-3GRY* CRMB265-3LGY*	CRMB340-4GRY* CRMB340-4LGY*

* Lockable option available – add suffix ‘L’ e.g. CRMB265-3GRYL. Floorbox lids must never be locked whilst in use. Box not supplied with key. Supplied complete as floorbox with 8mm recess lid. Smaller 1 or 2 compartment floorbox available in Cablelink Plus Single Pan Box, see page 23 for more details. For pre-configured options available – see page 21.

Accessory Modules

The conduit entry faces are integral with the accessory plate, enabling quick termination to the power or data plate and facilitates the remaining part of the back box to be fitted quickly with no risk to wiring being damaged.

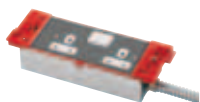
Serviced Power Modules

DESCRIPTION	LEFT HAND MODULES	
	STANDARD	CLEAN EARTH
2G 13A Switch Socket Outlet	CRM11730*	CRM11730CE*
2G 13A Switch Socket Outlet Non Standard (T Pin)	CRM11730NS*	CRM11730NSCE*
2G 13A Socket Outlet	CRM11731*	
2G 13A Socket Outlet Non Standard (T Pin)	CRM11731NS*	
2G 13A RCD Switch Socket Outlet	CRM11735*	
2G 13A Angled Socket Outlet	CRM11745	CRM11745CE
3G 13A Socket Outlet	CRM11720	CRM11720CE
4G 13A Switch Socket Outlet†	CRM11750	CRM11750CE
4G 13A Socket Outlet	CRM11751	
4G 13A Socket Outlet Non Standard (T Pin)	CRM11751NS	
4G 13A Switch Socket Outlet Non Standard (T Pin)†		CRM11750NSCE
2G 16A 2P+E German Socket Outlet NON UK	CRM11740	
2G 15A 127V USA Socket Outlet NON UK	CRM11741	

- Modules are available Left Hand and Right Hand to achieve a ‘staggered’ arrangement
- ‘Staggered’ arrangement ensures strain relief clearance for moulded plug tops
- Add ‘RH’ suffix for Right Hand Module, e.g. CRM11730RH
- When four socket outlets are required, order CRM11750 as ‘staggered’ arrangement is built in
- For more detail on how to order and configure your Cablelink Plus Modular Floorbox, please see page 89-92



Left Hand Module – CRM11730



Right Hand Module – CRM11730RH



Modules have unique two piece design to provide quick and safe installation.

Clean Earth switched power modules are identified with red rockers, unswitched with red sockets.

† Double module size with staggered arrangement to provide strain relief clearance for moulded plugs.

* Add ‘RH’ suffix for Right Hand Module, e.g. CRM11730RH

raised floor systems

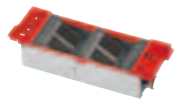
customer services +44 (0)1745 532343

Accessory Modules

Unserviced Data Modules



CRM21201



CRM21215

PART NO.	DESCRIPTION
CRM21101	2 x LJU/2 Apertures
CRM21201	4 x LJU6C Apertures (KNOCKOUTS)
CRM21301	6 x LJU6C Apertures
CRM21500	4 x ST Fibre Connector Apertures
CRM21215	4 x LJU6C Aperture Wave Plate
CRM21117	4 x Alphasnap Apertures
CRM31501	2 x Euro 50x50mm Apertures
CRM31502	2 x 45x45mm Apertures
CRM31503	1 x Euro 150x50mm Aperture
CRM31261	2 x IBM LAN
CRM31341	2 x BNC
CRM31361	4 x BNC
CRM21205	4 x KRONE RJ45

Earthing studs are provided on all Unserviced data modules to enable a reliable connection to earth to be made. Earthing Kit CX-10 is recommended for use to ensure the earthing cable is connected correctly.

Other Modules



CRM7000

PART NO.	DESCRIPTION
CRM31201	Blank Module
CRM7000	Cable Dump

Optional Extras



Lid Tether

PART NO.	DESCRIPTION
CX-01	Cable Retainers – pack of 10
CX-02	Lid Tether Kit – pack of 5
CX-04GRY	Cord Cap for 265x265 and 340x265mm Lid – Grey
CX-04LGY	Cord Cap for 265x265 and 340x265mm Lid – Light Grey
CX-10	Earthing Kit – pack of 10
CRXKEY	Lock Key – pack of 2
CXLP265	Lid Packer 265x265 2mm
CXLP340	Lid Packer 340x265 2mm
CRMA-1	Cutting template for 265x265mm floorbox
CRMA-2	Cutting template for 340x265mm floorbox

technical hotline +44 (0)1268 563720

raised floor systems

Pre-Configured Range

To aid fast and simple product selection, storage and installation, a selection of popular pre-configured floorboxes are available to order:

- 2, 3 or 4 module options
- Supplied with Serviced Power and/or Unserviced Data Plates
- Choice of standard modules or pre-wired to a unfused tap-off
- Pre-wired boxes supplied with a choice of 3m or 5m fused tap-off, High Integrity Earthing compliance[†] as standard

2 Module Configuration – 265x265mm Floorbox

	PART NO.	MODULE 1	MODULE 2	MODULE 3	TAP-OFF
	CRM321	2G Switch Socket Outlet	Blank	4G Data Plate LJU6C	NA
	CRM321W	2G Switch Socket Outlet	Blank	4G Data Plate LJU6C	UT33201 Grey 4mm ² 3m

All modules supplied set at 90mm from top of lid to base of module.

Supplied as Grey (GRY) finish, Light Grey (LGY) finish available via MK Design Service, see page 7.

3 Module Configurations – 265x265mm Floorbox

	PART NO.	MODULE 1	MODULE 2	MODULE 3	TAP-OFF
	CRM333	2G Switch Socket Outlet	4G Data Plate LJU6C	4G Data Plate LJU6C	NA
	CRM333W	2G Switch Socket Outlet	4G Data Plate LJU6C	4G Data Plate LJU6C	UT33201 Grey 4mm ² 3m
	CRM334	2G Switch Socket Outlet	2G Switch Socket Outlet	4G Data Plate LJU6C	NA
	CRM334W	2G Switch Socket Outlet	2G Switch Socket Outlet	4G Data Plate LJU6C	UT33201 Grey 4mm ² 3m
	CRM336	2G Switch Socket Outlet Clean Earth	2G Switch Socket Outlet Clean Earth	4G Data Plate LJU6C	NA
	CRM336W	2G Switch Socket Outlet Clean Earth	2G Switch Socket Outlet Clean Earth	4G Data Plate LJU6C	UT33204 CE Red 4mm ² 3m

Tap-offs are also available in 5m options, add suffix '-5,' e.g. CRM321W-5. Please note this tap-off is unfused, the track must be derated to a max of 32A

All modules supplied set at 90mm from top of lid to base of module.

Supplied as Grey (GRY) finish, Light Grey (LGY) finish available via MK Design Service, see page 7.

4 Module Configurations – 340x265mm Floorbox

	PART NO.	MODULE 1	MODULE 2	MODULE 3	MODULE 4	TAP-OFF
	CRM431	2G Switch Socket Outlet	Blank	Blank	4G Data Plate LJU6C	NA
	CRM431W	2G Switch Socket Outlet	Blank	Blank	4G Data Plate LJU6C	UT33201 Grey 4mm ² 3m
	CRM433	2G Switch Socket Outlet	Blank	4G Data Plate LJU6C	4G Data Plate LJU6C	NA
	CRM433W	2G Switch Socket Outlet	Blank	4G Data Plate LJU6C	4G Data Plate LJU6C	UT33201 Grey 4mm ² 3m
	CRM434	2G Switch Socket Outlet	2G Switch Socket Outlet	Blank	4G Data Plate LJU6C	NA
	CRM434W	2G Switch Socket Outlet	2G Switch Socket Outlet	Blank	4G Data Plate LJU6C	UT33201 Grey 4mm ² 3m
	CRM436	2G Switch Socket Outlet Clean Earth	2G Switch Socket Outlet Clean Earth	Blank	4G Data Plate LJU6C	NA
	CRM436W	2G Switch Socket Outlet Clean Earth	2G Switch Socket Outlet Clean Earth	Blank	4G Data Plate LJU6C	UT33204 CE Red 4mm ² 3m
	CRM444	2G Switch Socket Outlet	2G Switch Socket Outlet	4G Data Plate LJU6C	4G Data Plate LJU6C	NA
	CRM444W	2G Switch Socket Outlet	2G Switch Socket Outlet	4G Data Plate LJU6C	4G Data Plate LJU6C	UT33201 Grey 4mm ² 3m

Tap-offs are also available in 5m options, add suffix '-5,' e.g. CRM321W-5. Please note this tap-off is unfused, the track must be derated to a max of 32A

All modules supplied set at 90mm from top of lid to base of module.

Supplied as Grey (GRY) finish, Light Grey (LGY) finish available via MK Design Service, see page 7.

[†]In the published 17th Edition of the IEE Wiring Regulations, these requirements are found in Regulation 543.7. (16th Edition = Section 607)

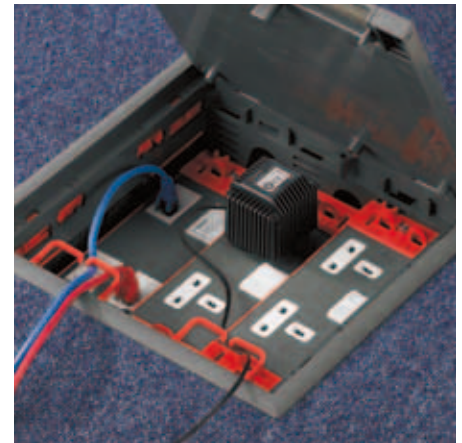
Continuing Professional Development through the MK Electric Technical Seminar Programme

TITLE	BRAND REPRESENTED	DESCRIPTION	EXTERNAL APPROVAL
High Integrity Earthing	MK Electric Ackermann	A review of the requirements of BS 7671:2008 in relation to the earthing requirements for the installation of equipment with high circuit protective conductor currents, the reasons behind it, the requirements and methods of compliance.	Construction CPD Service

Duration:
1 hour

Who should attend:
Electrical Contractors, Specifiers & Consultants

Recent years have seen a huge increase in Information Technology equipment, this brings with it implications for the electrical installation. This seminar takes into account this type of equipment and looks in detail how the electrical installation has to comply with the requirements of BS 7671:2008 – Earthing Requirements For The Installation Of Equipment Having High Protective Conductor Currents.



Content

- Why is the Regulation necessary
- Criteria & installation issues
- The Regulations
- Ring & radial circuits

